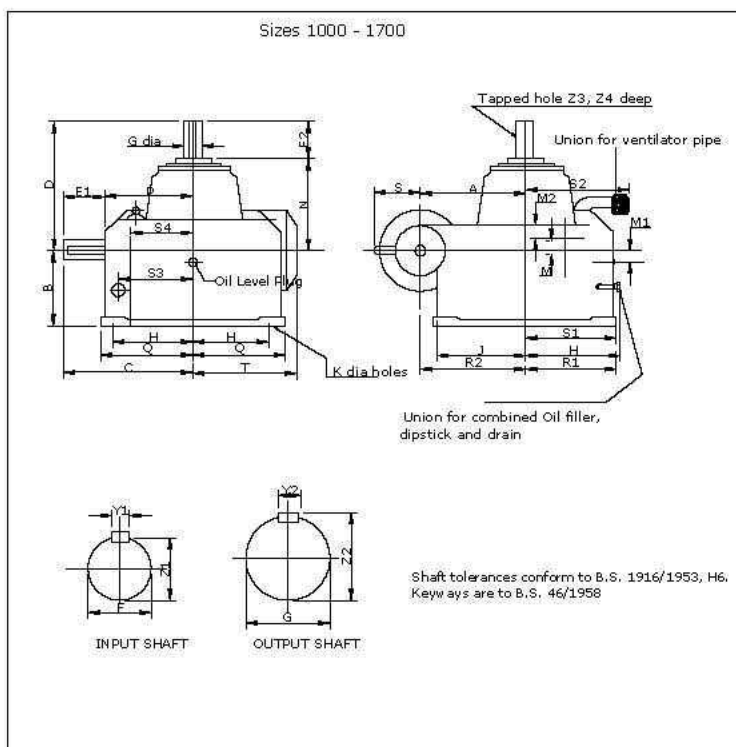
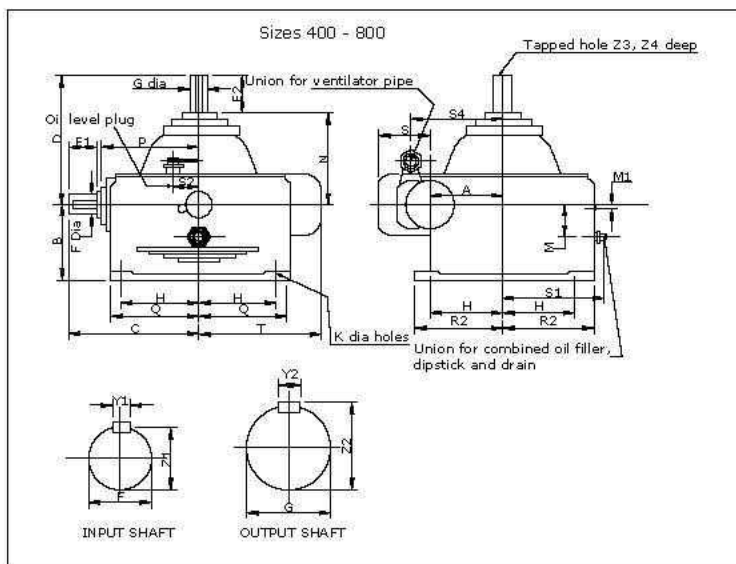


# GREAVES COOLING TOWER UNITS



Unit size	400	500	600	700	800	1000	1200	1400	1700
A	101.6	127.0	152.4	177.8	203.2	254.0	304.8	355.6	431.8
B	171.5	190.5	209.6	228.6	241.3	279.4	304.8	330.2	406.4
*C	229	260	279	318	343	425	495	572	679
*D	343	381	419	432	470	540	597	730	800
*E1	67	73	76	86	89	121	124	149	181
*E2	89	102	114	127	140	152	171	191	203
*E3	54	73	73	83	83	89	89	146	152
*E4	83	95	114	114	127	143	162	210	222
F	31.750	38.100	38.100	44.450	44.450	57.150	63.500	76.200	82.550
G	31.735	38.085	38.085	44.435	44.435	57.135	63.482	76.182	82.527
H	44.435	50.800	57.150	63.500	69.850	82.550	95.250	114.300	139.700
J	44.435	50.782	57.135	63.482	69.832	82.527	95.227	114.277	139.675
H	114.3	139.7	152.4	177.8	203.2	260.4	317.5	355.6	431.8
J	--	--	--	--	--	235.0	266.7	304.8	431.8
K	20.6	20.6	23.8	23.8	27.0	31.8	34.9	41.3	41.3
L	32	32	38	38	44	51	57	64	76
M	65.0	77.7	82.6	90.4	96.8	117.6	130.3	152.4	196.9
M1	16.0	16.0	19.1	20.6	22.4	28.7	33.3	35.1	28.7
M2	131.8	144.5	150.9	155.7	163.6	171.5	190.5	209.6	215.9
N	254	279	305	305	330	387	425	540	559
P	159	184	200	229	251	311	368	425	514
Q	140	165	184	210	238	311	368	425	502
R1	140	165	184	210	238	299	356	413	502
R2	140	165	184	210	238	273	305	362	502
S	111	124	133	143	149	160	177	203	241
S1	173	198	217	243	268	337	387	419	521
S2	75	75	75	75	75	248	292	315	419
S3	--	--	--	--	--	266.7	317.5	349.3	381
S4	147.6	174.8	196.9	227.1	251.0	193.8	228.6	254.9	366.6
T	222	254	270	305	327	378	441	521	629
Y1	7.976	9.576	9.576	11.176	11.176	15.926	15.926	19.101	22.276
Y2	7.925	9.525	9.525	11.125	11.125	15.875	15.875	19.050	22.225
Z1	11.176	12.751	15.926	15.926	19.101	22.276	25.476	31.826	38.202
Z2	11.125	12.700	15.875	15.875	19.050	22.225	25.400	31.750	38.100
Z3	34.47	40.49	40.49	47.50	47.50	61.52	67.87	81.15	88.90
Z4	47.73	53.98	61.75	68.10	75.03	89.13	103.20	123.47	150.04
Z5	47.50	53.75	61.52	67.87	74.80	88.87	102.95	123.22	149.73
Z6	M16	M16	M20	M20	M20	M20	M24	M24	M24
Z7	36	36	40	40	40	40	50	50	50

## Approximate Shipping Specification and Oil Capacities

Size	400	500	600	700	800	1000	1200	1400	1700
Net weight (kg)	93	132	175	230	280	505	721	1145	1950
Gross weight (kg)	109	152	198	274	348	685	947	1465	2300
Volume packed (cu.m)	0.14	0.20	0.24	0.32	0.48	1.44	1.72	2.28	3.05
Oil required at 1 st filling (lit.)	4.4	6.3	6.9	11.2	13.8	25	41	75	110