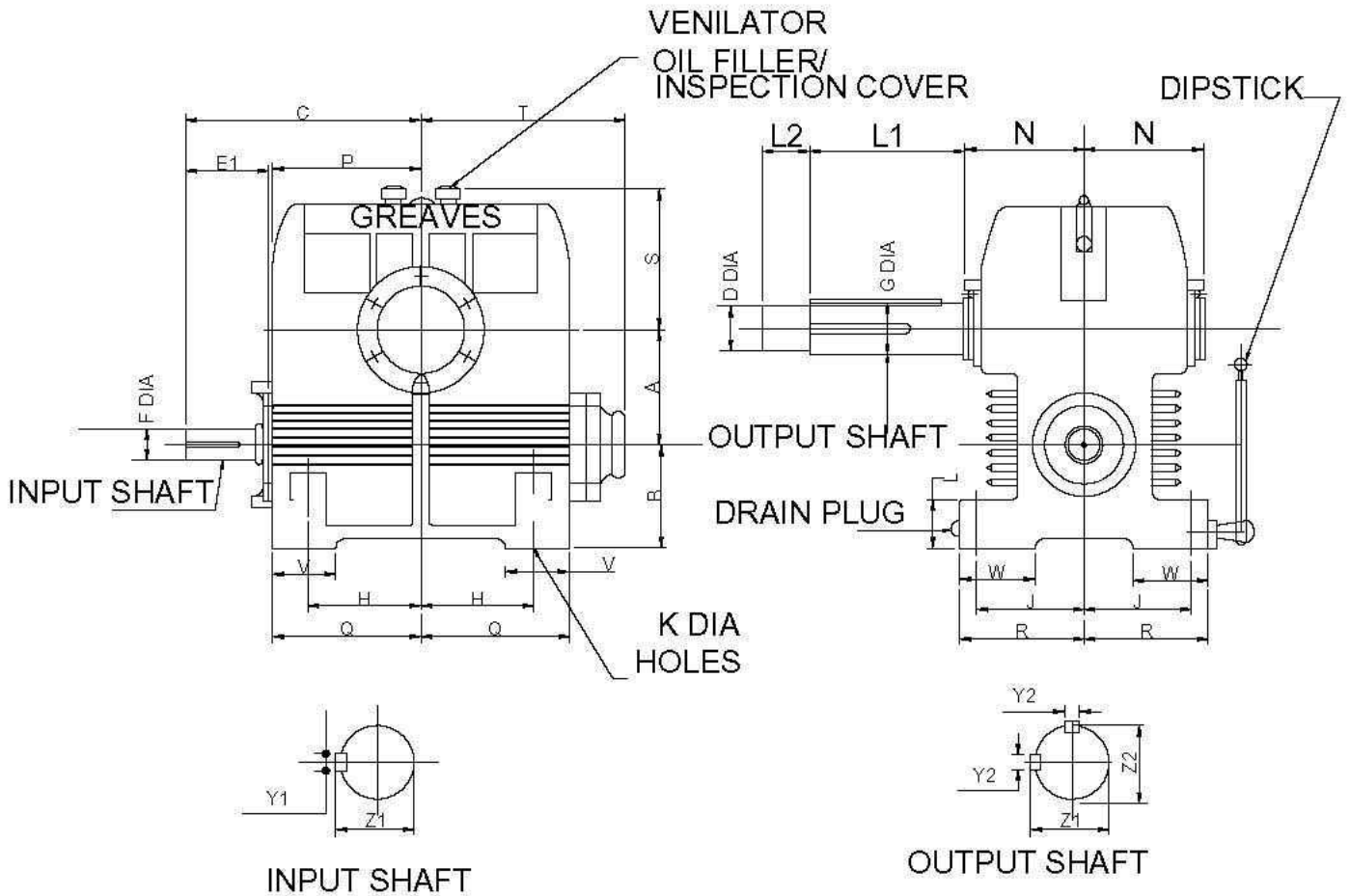


LIFT GEAR BOX



SIZE OF UNIT	A	B	C	E1	F	G	H	J	K	L	N	P	Q	R	S	T	V	W	Y1	Y2	Z1	Z2
SLA 500	127	114.3	260	73	38.100 38.085	57.190 57.180	123.8	111.1	20.6	64	133	184	164	137	169	225	70	83	9.576 9.525	15.926 15.875	40.72 40.49	61.75 61.52
SLA 600	162.4	127.0	279	76	38.100 38.085	63.600 63.482	133.4	120.7	23.6	64	140	208	179	149	184	249	78	89	9.576 9.525	15.926 15.875	40.72 40.49	68.10 67.87
SLA 700	177.8	146.1	318	86	44.490 44.435	69.890 69.832	162.4	133.4	23.8	70	161	237	208	182	210	281	89	98	11.176 11.125	19.101 19.060	47.73 47.50	75.03 74.80
SLA 800	203.2	146.1	343	89	44.490 44.435	74.813 74.800	171.5	133.4	27.0	78	169	280	230	171	235	300	102	102	11.176 11.125	19.101 19.060	47.73 47.50	79.01 79.08

NOTE:- A) DIMENSIONS L1, L2, & D ARE TO CUSTOMERS SPECIFICATION AND FULL DETAILS SHOULD BE SUBMITTED WITH ENQUIRES FOR LIFT UNIS.
 B) FOR BIGGER SIZES GEAR BOXES REFER GREAVES LIMITED.
 C) 'P' DIMENSIONS ARE OVER SCREW HEADS.